

# "YOU MAY HAVE HEARD WE HAD A FIRE"

REBUILDING AND SERVING AFTER CATASTROPHIC  
EVENTS AT ECKHART PUBLIC LIBRARY





**ALAN SWEENEY, IT MANAGER**

asweeny@epl.lib.in.us



**ANGIE MAPES TURNER, PRESIDENT, ECKHART LIBRARY FOUNDATION**

angela.m.mapes@gmail.com



**JAMIE LONG, MARKETING & COMMUNITY ENGAGEMENT MANAGER**

jlong@epl.lib.in.us



**JENNY KOBIELA MONDOR, LIBRARY STRATEGIST, MCLS**

kobielamondorj@mcls.org

Former Assistant Director at Eckhart Public Library, Friends of Eckhart Public Library Board Member

# Picture It

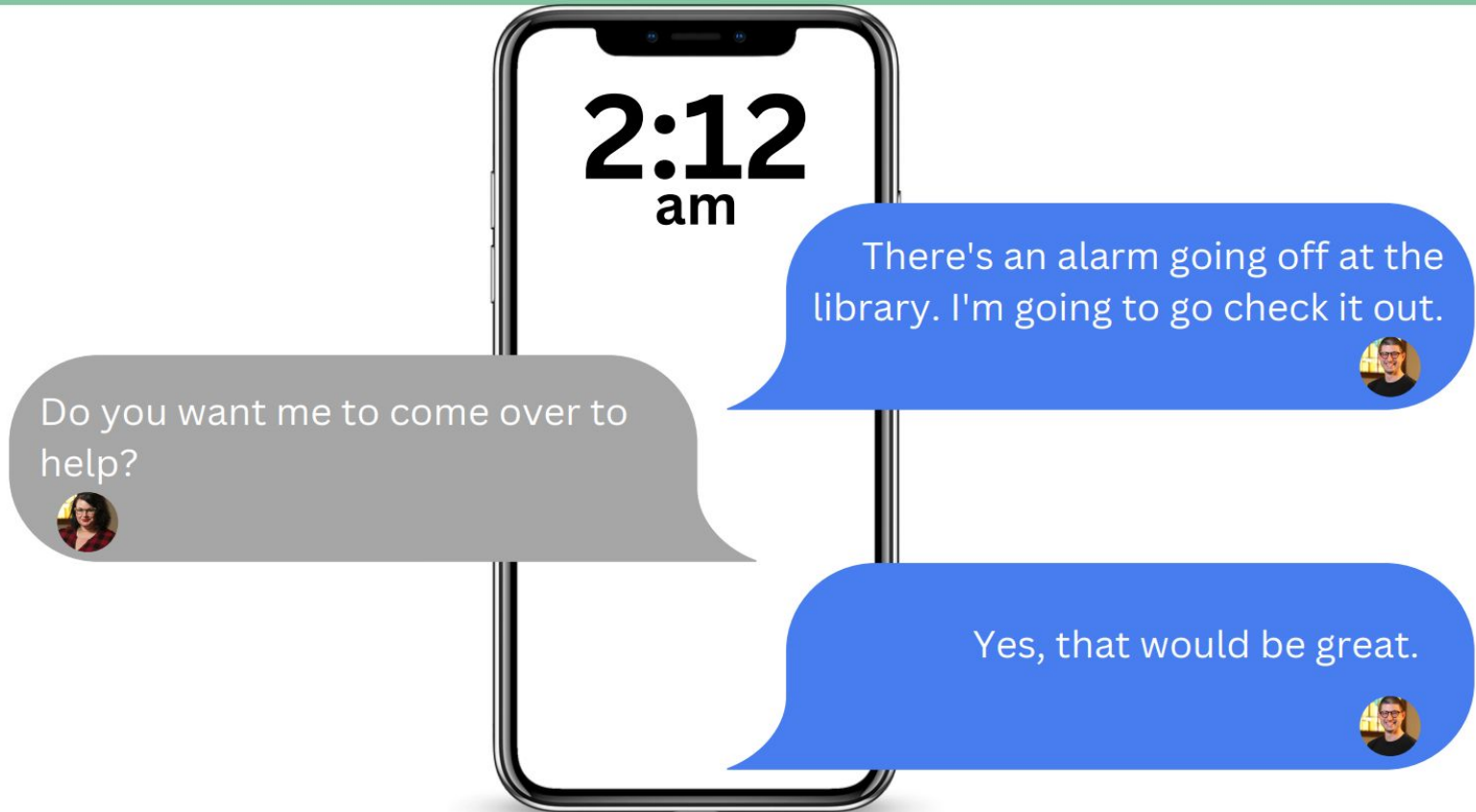
## Chicago, June 2017

Staff from Eckhart Public Library traveled on a bus to the  
Exhibit hall for American Library Association's Annual  
Conference

We met Carla Hayden! We brought back tons of swag and even  
more ideas.



# July 2, 2017













Some of these photos have been brightened to illuminate more detail.

Entrance

Melted Computer

Light Switches

Books

Circulation Desk

Light Fixture







**Broken Windows**  
**Melted Computer Monitor**

**Light Fixture**

**RFID Gates**

**Display Rack**

**Carpet**








Television

Stained Glass,  
1910





Computer



**Computer**

**Receipt Printer**

**Stapler**

**Signage Holder**

**Desk**



These shelves were cream colored

Broken Glass

Audiobooks





**"Cream" Shelves**



**Books With  
Melted Covers**

**DVDs**














**Computer**

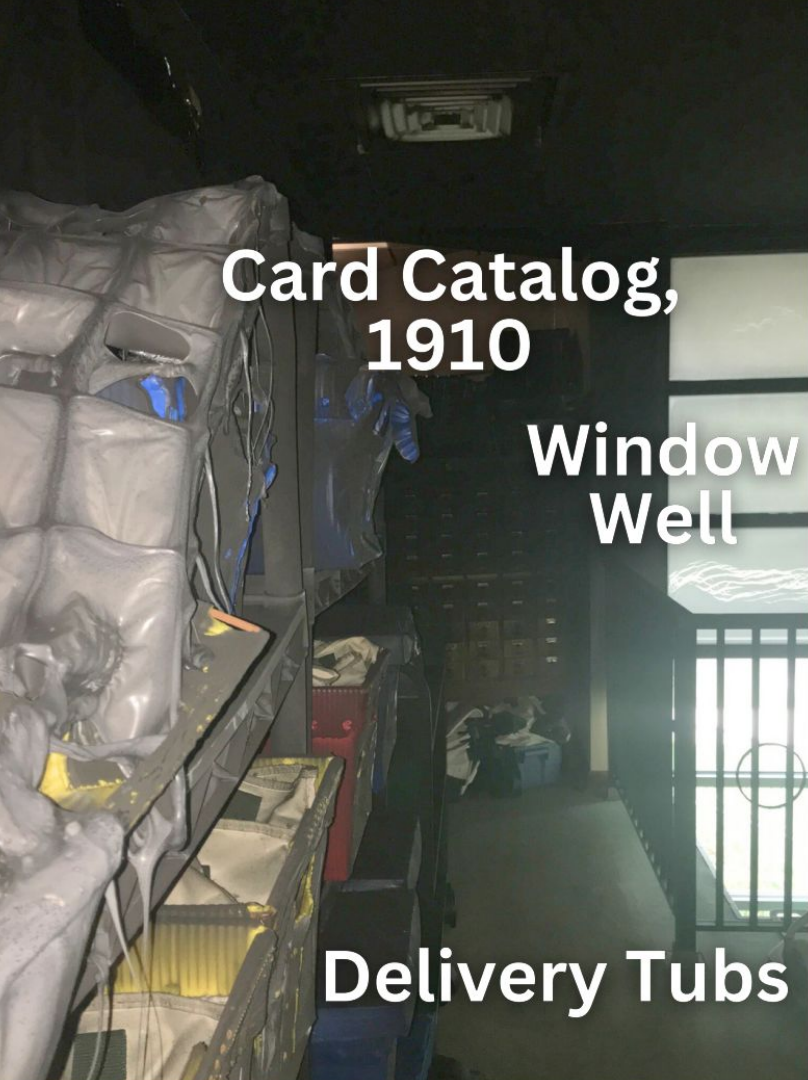
**Internal  
Book Drop**

**Sink**

The image shows a close-up of a wall with significant paint damage. The top half of the wall has a dark, cracked, and peeling surface. A large, dark, irregular stain, possibly from an oil painting, is visible on the right side of the wall. The stain has a vertical, elongated shape with some internal texture and a dark, almost black, center. Below the stain, there are some lighter, more uniform areas of paint. In the bottom left corner, a portion of a wooden staircase railing is visible. The overall lighting is somewhat dim, and the colors are muted, with a lot of grey and brown tones.

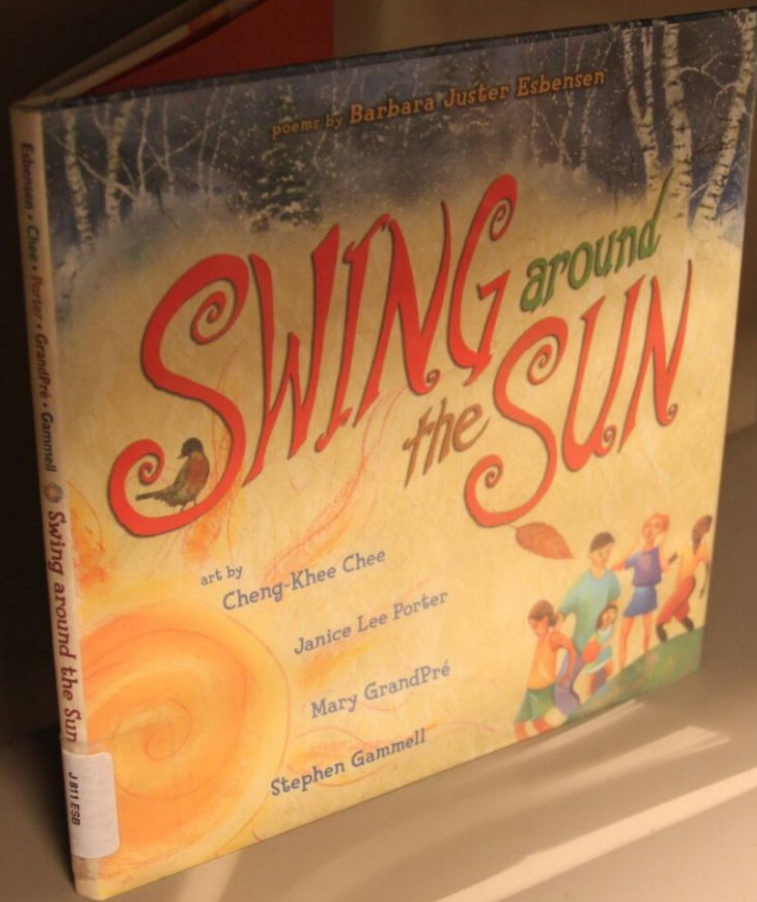
Oil Paintings















# YIKES!

## BUT WHAT HAPPENED?

### JULY 2, 2017

We were told a book scanner likely caused the fire, and that it was likely electrical.

### JULY 3-4, 2017

Paintings were removed to be sent for restoration in Chicago, IL.

### JULY 5-6, 2017

It was revealed that the fire was an act of arson. A firework mortar was placed in the internal book drop.

A crime scene investigation scene. A yellow banner with the text "CRIME SCENE DO NOT CROSS" in bold black letters is stretched across the middle of the image. The background shows a park-like setting with large green trees, a stone fountain, and a blue house in the distance. A white van is parked on a street to the right. In the foreground, there are large, dark, curved structures that appear to be part of a sculpture or a large piece of equipment.

**CRIME SCENE DO NOT CROSS**



But...

What do we do now?



***IN CASE OF  
EMERGENCY  
REBUILD LIBRARY***

# This Was Our War Room





# We Were Lucky

We had two other buildings as part of our library campus

We were closed for 7 days and resumed service our of our  
Genealogy Center and Teen Library on July 10, 2017



# Severe Weather & Tornadoes July 10th, 2017

[Weather.gov](#) > [Northern Indiana](#) > Severe Weather & Tornadoes July 10th, 2017

Northern Indiana

Weather Forecast Office

We were not supported by mother nature.

Both buildings had flooding that needed to be dealt with as well as water in the burned library.

"I put a half melted trash can under where I think the leak is."

-Alan





# Keep Going



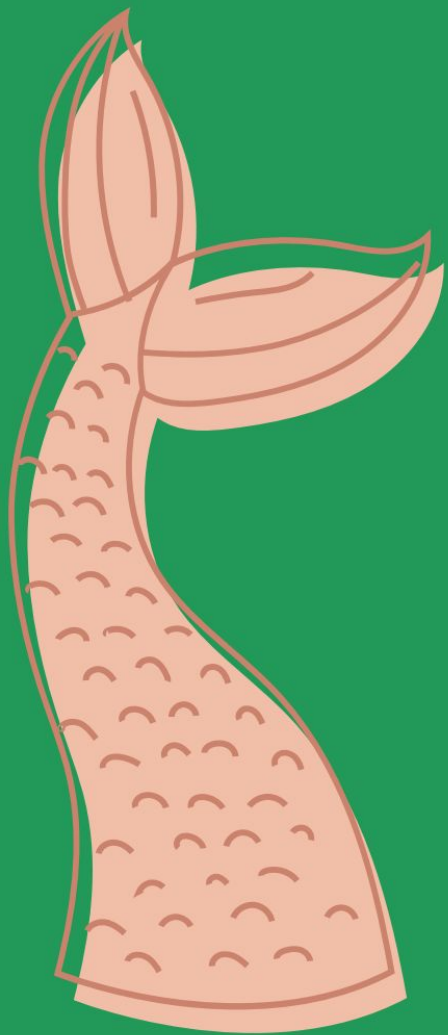
# Accept Help











We want to  
be where the  
people are.