



Unearth a Story™ with the Indiana State Museum: Suggested Materials for Activities

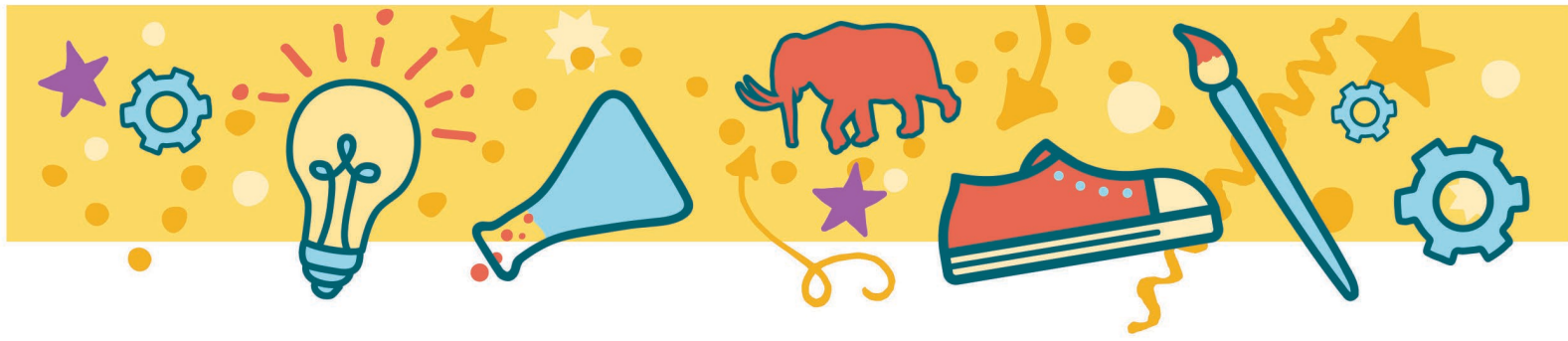
Ice Excavation Activity:

- Things to put inside ice:
 - Mini Ice Age animals
 - Mammal and Dinosaur skulls
 - Cambrian animals
- Excavation tools:
 - Chopsticks
 - Wood stylus
 - Small Wooden Hammers
 - Regular sized pipettes or Pipettes for small hands
- Extension options:
 - Test what melts – sugar, salt, vinegar, warm water, etc.
 - Food coloring to see the cracks in the ice (use small squeezable bottles for little hands)
 - Use hot water with small electric kettle

Dig Pit Activity:

- Toothbrushes
- Paintbrushes
- Plastic container – Really Useful boxes are sturdy and hold up well with the weight
- Real fossils (recommend removing dinosaur examples as dinosaurs haven't been found in Indiana) – 12 piece set or 100 piece set
- Archeology items
- Dig kit
- Kinetic Sand





Fossil Casts Activity:

- Crayola Model Magic, 1 oz, white
- Fossil Stones – there are also bug and animal sets.
- Magnifying Glasses - Glass lens or Jumbo magnifiers
- Sandwich bags
- Cutting Boards – cut into quarters
- Seashells

Examples of Fossils:

- Mastodon Tooth
- Mammoth Tooth
- Giant Microbes:
 - Mammoth skull plush
 - Saber Tooth Cat
 - Ground Sloth
 - Trilobite
 - Cambrian pack

Supplemental items:

- insta snow
- Larger Ice age animals for dramatic play

